






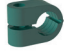
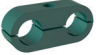

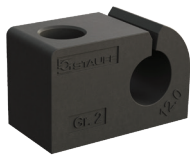
	<b>Clamp Body - Single Design</b> LBBU	136
	<b>Clamp Body - Twin Design</b> LBBU	137
	<b>Weld Plate</b> LBBU-SP	138
	<b>Sleeve</b> LBBU-HUE	138
	<b>Cover Plate</b> LBBU-DP	139
	<b>Hexagon Head Bolt</b> AS	139
	<b>Clamp Body - Single Design</b> LB	140
	<b>Clamp Body - Twin Design</b> LBG / LBU	141
	<b>Clamp Body - Single Design</b> LN	142
	<b>Clamp Body - Twin Design</b> LNGF / LNUF	143
	<b>Cover Plate</b> DPL	143

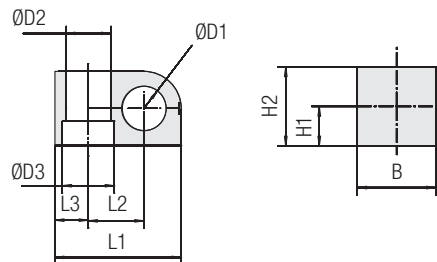
## Clamp Body - Single Design Type LBBU



Size 2 in slotted design



Size 1 and 3 with film hinge



### Ordering Codes

#### Clamp Body \*LBBU-\*1\*06-\*SA87-\*M8/U5/16

- \* Light Series LBBU **LBBU**
- \* STAUFF Group **1**
- \* Exact outside diameter Ø D1 (mm) **06**
- \* Material code (see below) Size 1 and 3 **SA87**
- Size 2 **SA73**
- \* Thread code (suitable for bolts M8 and U5/16) **M8/U5/16**

### Standard Materials



**Thermoplastic Elastomer** (87 Shore-A)  
 Colour: Black  
 Material code: **SA87** (Size 1 and 3)  
 Material code: **SA73** (Size 2)

See pages 178 / 179 for material properties and technical information.

Alternative materials are available upon request. Please contact STAUFF for further information.

### Product Features

- Compact and light-weight design for applications in which space is limited
- Available in 3 different sizes and covering all standard metric and imperial diameters between 4 mm and 32 mm
- Vibration-damping and noise-reducing clamp body material with UV, ozone and weathering-resistant characteristics
- Embedded metal sleeve to ensure stability of the clamp assembly

Group	Outside Diameter		Nominal Bore Pipe (in)	Ordering Codes (1 Clamp Body)	Dimensions (mm/in)												
	Pipe / Tube / Hose Ø D1 (mm)	(in)			Ø D2	Ø D3	L1	L2	L3	H1	H2	B					
1	6			LBBU-106-SA87-M8/U5/16													
	6,4	1/4		LBBU-106.4-SA87-M8/U5/16													
	8	5/16		LBBU-108-SA87-M8/U5/16													
	9,5	3/8		LBBU-109.5-SA87-M8/U5/16	12	14	34	15	9	10	20	20					
	10		1/8	LBBU-110-SA87-M8/U5/16	.47	.55	1.34	.59	.35	.39	.79	.79					
	11			LBBU-111-SA87-M8/U5/16													
	12			LBBU-112-SA87-M8/U5/16													
	12,7	1/2		LBBU-112.7-SA87-M8/U5/16													
	10		1/8	LBBU-210-SA87-M8/U5/16													
	11			LBBU-211-SA87-M8/U5/16													
2	12			LBBU-212-SA87-M8/U5/16													
	12,7	1/2		LBBU-212.7-SA87-M8/U5/16													
	13,5		1/4	LBBU-213.5-SA87-M8/U5/16													
	14			LBBU-214-SA87-M8/U5/16	20	14	39	18	9	12	24	20					
	15			LBBU-215-SA87-M8/U5/16	.47	.55	1.54	.71	.35	.47	.94	.79					
	16	5/8		LBBU-216-SA87-M8/U5/16													
	17,2		3/8	LBBU-217.2-SA87-M8/U5/16													
	18			LBBU-218-SA87-M8/U5/16													
	19	3/4		LBBU-219-SA87-M8/U5/16													
	20			LBBU-220-SA87-M8/U5/16													
3	21,3			LBBU-321.3-SA87-M8/U5/16													
	22	7/8		LBBU-322-SA87-M8/U5/16													
	23			LBBU-323-SA87-M8/U5/16													
	25			LBBU-325-SA87-M8/U5/16	12	14	57,5	23,5	15	20	40	30					
	25,4	1		LBBU-325.4-SA87-M8/U5/16	.47	.55	2.26	.93	.59	.79	1.57	1.18					
	28			LBBU-328-SA87-M8/U5/16													
	30			LBBU-330-SA87-M8/U5/16													
	32	1-1/4		LBBU-332-SA87-M8/U5/16													

Additional outside diameters are available upon request. Please contact STAUFF for further information.



#### Type of Mounting SP (with Weld Plate LBBU-SP)

- Clamp assembly consisting of:
- 1 Hexagon Head Bolt AS
  - 1 Cover Plate LBBU-DP
  - 1 Sleeve LBBU-HUE
  - 1 Clamp Body LBBU
  - 1 Weld Plate LBBU-SP

#### Order Code

**LBBU-SP-322-SA87-DP-AS-M8-W10**  
**W10** (Weld Plate made of Carbon Steel, phosphated; Other metal parts made of Carbon Steel, zinc/nickel-plated) is the standard option for this type of installation. For UNC threads / bolts, please replace M8 by U5/16.



#### Type of Mounting SM (with Hexagon Rail Nut SM-2-5D)

- Clamp assembly consisting of:
- 1 Hexagon Head Bolt AS
  - 1 Cover Plate LBBU-DP
  - 1 Sleeve LBBU-HUE
  - 1 Clamp Body LBBU
  - 1 Hexagon Rail Nut SM-2-5D (for use with Mounting Rail TS, see page 24 for details)

#### Order Code (Mounting Rail TS not included.)

**LBBU-SM-322-SA87-DP-AS-M8-W3**  
**W3** (Metal parts made of Carbon Steel, zinc/nickel-plated) is the standard option for this type of installation. For UNC threads / bolts, please replace M8 by U5/16.



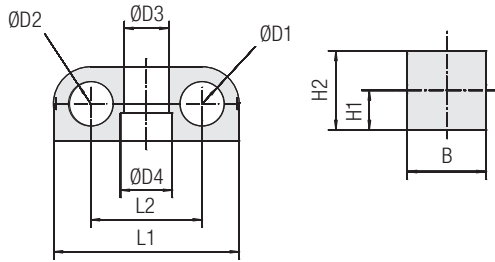
#### Type of Mounting PM (for panel mounting without Weld Plate or Hexagon Rail Nut)

- Clamp assembly consisting of:
- 1 Hexagon Head Bolt AS
  - 1 Cover Plate LBBU-DP
  - 1 Sleeve LBBU-HUE
  - 1 Clamp Body LBBU

#### Order Code

**LBBU-PM-322-SA87-DP-AS-M8-W3**  
**W3** (Metal parts made of Carbon Steel, zinc/nickel-plated) is the standard option for this type of installation. For UNC threads / bolts, please replace M8 by U5/16.

Alternative sizes (e.g. for bolts M6 and 1/4–20 UNC), materials and surface finishings are available upon request.

**Clamp Body - Twin Design  
Type LBBU**


Size 1D and 3D with film hinge



Size 2D in slotted design

Group STAUFF	Outside Diameters Pipe / Tube / Hose Ø D1 / Ø D2 (mm) (in)		Nominal Bore Pipe (in)	Ordering Codes (1 Clamp Body)	Dimensions (mm/in)							
	Ø D3	Ø D4	L1	L2	H1	H2	B					
1D	4			LBBU-104/04-SA87-M8/U5/16								
	6			LBBU-106/06-SA87-M8/U5/16								
	6,4	1/4		LBBU-106.4/06.4-SA87-M8/U5/16								
	8	5/16		LBBU-108/08-SA87-M8/U5/16								
	9,5	3/8		LBBU-109.5/09.5-SA87-M8/U5/16	12	14	50	30	10	20	20	
	10		1/8	LBBU-110/10-SA87-M8/U5/16	.47	.55	1.97	1.18	.39	.79	.79	
	11			LBBU-111/11-SA87-M8/U5/16								
	12			LBBU-112/12-SA87-M8/U5/16								
	12,7	1/2		LBBU-112.7/12.7-SA87-M8/U5/16								
2D	10		1/8	LBBU-210/10-SA87-M8/U5/16								
	11			LBBU-211/11-SA87-M8/U5/16								
	12			LBBU-212/12-SA87-M8/U5/16								
	12,7	1/2		LBBU-212.7/12.7-SA87-M8/U5/16								
	13,5		1/4	LBBU-213.5/13.5-SA87-M8/U5/16								
	14			LBBU-214/14-SA87-M8/U5/16	12	14	59	35	12	24	20	
	15			LBBU-215/15-SA87-M8/U5/16	.47	.55	2.32	1.38	.47	.94	.79	
	16	5/8		LBBU-216/16-SA87-M8/U5/16								
	17,2		3/8	LBBU-217.2/17.2-SA87-M8/U5/16								
	18			LBBU-218/18-SA87-M8/U5/16								
19	3/4		LBBU-219/19-SA87-M8/U5/16									
20			LBBU-220/20-SA87-M8/U5/16									
3D	21,3			LBBU-321.321.3-SA87-M8/U5/16								
	22	7/8		LBBU-322/22-SA87-M8/U5/16								
	23			LBBU-323/23-SA87-M8/U5/16								
	25			LBBU-325/25-SA87-M8/U5/16	12	14	86	47	20	40	30	
	25,4	1		LBBU-325.4/25.4-SA87-M8/U5/16	.47	.55	3.39	1.85	.79	1.57	.79	
	28			LBBU-328/28-SA87-M8/U5/16								
	30			LBBU-330/30-SA87-M8/U5/16								
32	1-1/4		LBBU-332/32-SA87-M8/U5/16									

**Ordering Codes**
**Clamp Body \*LBBU-\*1\*06/06-\*SA87-\*M8/U5/16**

- \* Light Series LBBU **LBBU**
- \* 1st Part of STAUFF Group **1**
- \* Exact outside diameters Ø D1 / Ø D2 (mm) **06/06**
- \* Material code (see below) Size 1D and 3D **SA87**
- Size 2D **SA73**
- \* Thread code (suitable for bolts M8 and U5/16) **M8/U5/16**

**Standard Materials**

- 
- Thermoplastic Elastomer (87 Shore-A)**
  - Colour: Black
  - Material code: **SA87 (Size 1D and 3D)**
  - Material code: **SA73 (Size 2D)**


See pages 178 / 179 for material properties and technical information.

Alternative materials are available upon request. Please contact STAUFF for further information.

**Product Features**

- Compact and light-weight design for applications in which space is limited
- Available in 3 different sizes and covering all standard metric and imperial diameters between 4 mm and 32 mm
- Vibration-damping and noise-reducing clamp body material with UV, ozone and weathering-resistant characteristics
- Embedded metal sleeve to ensure stability of the clamp assembly

Additional outside diameters and combinations of different outside diameters are available upon request. Please contact STAUFF for further information.




**Type of Mounting SP**  
(with Weld Plate LBBU-SP)

Clamp assembly consisting of:

- 1 Hexagon Head Bolt AS
- 1 Cover Plate LBBU-DP
- 1 Sleeve LBBU-HUE
- 1 Clamp Body LBBU
- 1 Weld Plate LBBU-SP

**Order Code**  
**LBBU-SP-322/22-SA87-DP-AS-M8-W10**  
**W10** (Weld Plate made of Carbon Steel, phosphated; Other metal parts made of Carbon Steel, zinc/nickel-plated) is the standard option for this type of installation.  
For UNC threads / bolts, please replace M8 by U5/16.




**Type of Mounting SM**  
(with Hexagon Rail Nut SM-2-5D)

Clamp assembly consisting of:

- 1 Hexagon Head Bolt AS
- 1 Cover Plate LBBU-DP
- 1 Sleeve LBBU-HUE
- 1 Clamp Body LBBU
- 1 Hexagon Rail Nut SM-2-5D (for use with Mounting Rail TS, see page 24 for details)

**Order Code** (Mounting Rail TS not included.)  
**LBBU-SM-322/22-SA87-DP-AS-M8-W3**  
**W3** (Metal parts made of Carbon Steel, zinc/nickel-plated) is the standard option for this type of installation.  
For UNC threads / bolts, please replace M8 by U5/16.



**Type of Mounting PM**  
(for panel mounting without Weld Plate or Hexagon Rail Nut)

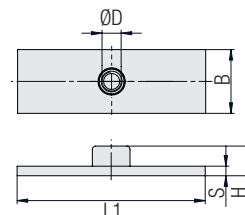
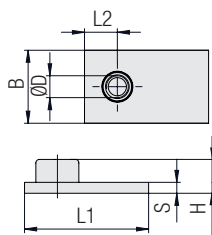
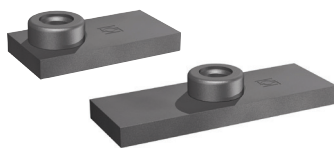
Clamp assembly consisting of:

- 1 Hexagon Head Bolt AS
- 1 Cover Plate LBBU-DP
- 1 Sleeve LBBU-HUE
- 1 Clamp Body LBBU

**Order Code**  
**LBBU-PM-322/22-SA87-DP-AS-M8-W3**  
**W3** (Metal parts made of Carbon Steel, zinc/nickel-plated) is the standard option for this type of installation.  
For UNC threads / bolts, please replace M8 by U5/16.

Alternative sizes (e.g. for bolts M6 and 1/4-20 UNC), materials and surface finishings are available upon request.

**Weld Plate**  
**Type LBBU-SP**



STAUFF Group 1 to 3

STAUFF Group 1D to 3D

**Ordering Codes**

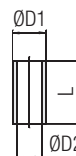
**Weld Plate**      \*LBBU-SP-\*1D-\*M8-\*W2

- \* Light Series LBBU **LBBU**
- \* Weld Plate **-SP**
- \* STAUFF Group **1D**
- \* Thread code    Metric ISO thread: M8 **M8**  
                          UNC thread: 5/16-18 UNC **U5/16**
- \* Material code    Carbon Steel, phosphated **W2**

Group STAUFF	Dimensions (mm/m)						Thread G	Ordering Codes (Standard Options)
	Ø D	L1	L2	H	B	S		
1	14	34	9	10,3	20	5	M8	LBBU-SP-1-M8-W2
	.55	1.34	.35	.41	.79	.20	5/16-18 UNC	LBBU-SP-1-U5/16-W2
2	14	39	9	10,3	20	5	M8	LBBU-SP-2-M8-W2
	.55	1.54	.35	.41	.79	.20	5/16-18 UNC	LBBU-SP-2-U5/16-W2
3	14	57,5	15	10,3	30	5	M8	LBBU-SP-3-M8-W2
	.55	2.26	.59	.41	1.18	.20	5/16-18 UNC	LBBU-SP-3-U5/16-W2
1D	14	50	X	10,3	20	5	M8	LBBU-SP-1D-M8-W2
	.55	1.97		.41	.79	.20	5/16-18 UNC	LBBU-SP-1D-U5/16-W2
2D	14	59	X	10,3	20	5	M8	LBBU-SP-2D-M8-W2
	.55	2.32		.41	.79	.20	5/16-18 UNC	LBBU-SP-2D-U5/16-W2
3D	14	86	X	10,3	30	5	M8	LBBU-SP-3D-M8-W2
	.55	3.39		.41	1.18	.20	5/16-18 UNC	LBBU-SP-3D-U5/16-W2

All threaded parts are available with Metric ISO thread or unified coarse (UNC) thread according to dimension table. Alternative sizes (e.g. for bolts M6 and 1/4-20 UNC), materials and surface finishings are available upon request.

**Sleeve**  
**Type LBBU-HUE**



Dimensions applicable only when used with Weld Plate LBBU-SP (**Type of Mounting SP**)

Dimensions applicable only when used with Hexagon Rail Nut SM-2-5D (**Type of Mounting SM**)

Dimensions applicable only when used for panel mounting without Weld Plate or Hexagon Rail Nut (**Type of Mounting PM**)

Group STAUFF	Dimensions (mm/m)			Ordering Codes (Standard Options)
	ØD1	ØD2	L	
1	12	9	13,5	LBBU-HUE-1/1D-SP-M8/U5/16-W3
	.47	.35	.53	
2	12	9	17,5	LBBU-HUE-2/2D-SP-M8/U5/16-W3
	.47	.35	.69	
3	12	9	33,5	LBBU-HUE-3/3D-SP-M8/U5/16-W3
	.47	.35	1.32	
1D	12	9	13,5	LBBU-HUE-1/1D-SP-M8/U5/16-W3
	.47	.35	.53	
2D	12	9	17,5	LBBU-HUE-2/2D-SP-M8/U5/16-W3
	.47	.35	.69	
3D	12	9	33,5	LBBU-HUE-3/3D-SP-M8/U5/16-W3
	.47	.35	1.32	

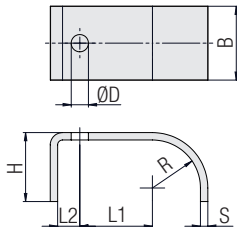
Group STAUFF	Dimensions (mm/m)			Ordering Codes (Standard Options)
	ØD1	ØD2	L	
1	12	9	12,8	LBBU-HUE-1/1D-SM-M8/U5/16-W3
	.47	.35	.50	
2	12	9	16,8	LBBU-HUE-2/2D-SM-M8/U5/16-W3
	.47	.35	.66	
3	12	9	32,8	LBBU-HUE-3/3D-SM-M8/U5/16-W3
	.47	.35	1.29	
1D	12	9	12,8	LBBU-HUE-1/1D-SM-M8/U5/16-W3
	.47	.35	.50	
2D	12	9	16,8	LBBU-HUE-2/2D-SM-M8/U5/16-W3
	.47	.35	.66	
3D	12	9	32,8	LBBU-HUE-3/3D-SM-M8/U5/16-W3
	.47	.35	1.29	

Group STAUFF	Dimensions (mm/m)			Ordering Codes (Standard Options)
	ØD1	ØD2	L	
1	12	9	18,8	LBBU-HUE-1/1D-PM-M8/U5/16-W3
	.47	.35	.74	
2	12	9	22,7	LBBU-HUE-2/2D-PM-M8/U5/16-W3
	.47	.35	.89	
3	12	9	38,8	LBBU-HUE-3/3D-PM-M8/U5/16-W3
	.47	.35	1.53	
1D	12	9	18,8	LBBU-HUE-1/1D-PM-M8/U5/16-W3
	.47	.35	.74	
2D	12	9	22,7	LBBU-HUE-2/2D-PM-M8/U5/16-W3
	.47	.35	.89	
3D	12	9	38,8	LBBU-HUE-3/3D-PM-M8/U5/16-W3
	.47	.35	1.53	

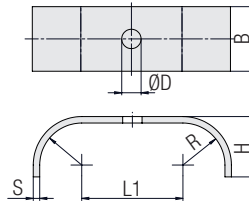
Alternative sizes (e.g. for bolts M6 and 1/4-20 UNC), materials and surface finishings are available upon request.



Cover Plate  
Type LBBU-DP



STAUFF Group 1 to 3



STAUFF Group 1D to 3D



Group STAUFF	Dimensions (mm/in)							Ordering Codes (Standard Options)
	Ø D	L1	L2	R	H	B	S	
1	9	15	9	10	16	20	3	LBBU-DP-1-M8/U5/16-W3
	.35	.59	.35	.39	.63	.79	.12	
2	9	18	9	12	20	20	3	LBBU-DP-2-M8/U5/16-W3
	.35	.71	.35	.47	.79	.79	.12	
3	9	23,5	15	19,5	28	30	3	LBBU-DP-3-M8/U5/16-W3
	.35	.93	.59	.77	1.10	1.18	.12	
1D	9	30	X	10	16	20	3	LBBU-DP-1D-M8/U5/16-W3
	.35	1.18		.39	.63	.79	.12	
2D	9	35		12	20	20	3	LBBU-DP-2D-M8/U5/16-W3
	.35	1.38		.47	.79	.79	.12	
3D	9	47	19,5	28	20	3	LBBU-DP-3D-M8/U5/16-W3	
	.35	1.85	.77	.63	.79	.12		

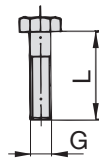
Ordering Codes

Cover Plate \*LBBU-DP-\*1D-\*M8/U5/16-\*W3

- \* Light Series LBBU LBBU
- \* Cover Plate -DP
- \* STAUFF Group 1D
- \* Thread code (suitable for bolts M8 and U5/16) M8/U5/16
- \* Material code Carbon Steel, zinc/nickel-plated W3

Alternative sizes (e.g. for bolts M6 and 1/4-20 UNC), materials and surface finishings are available upon request.

Hexagon Head Bolt  
Type AS



Hexagon Head Bolt AS

(according to DIN 931 / 933 or ANSI / ASME B18.2.1.)  
Dimensions applicable only when used with  
Weld Plate LBBU-SP (Type of Mounting SP)  
or Hexagon Rail Nut SM-2-5D (Type of Mounting SM)

Hexagon Head Bolt AS

(according to DIN 931 / 933 or ANSI / ASME B18.2.1.)  
Dimensions applicable only when used for panel mounting  
without Weld Plate or Hexagon Rail Nut  
(Type of Mounting PM)



Group STAUFF	Dimensions (mm/in)		Ordering Codes (Standard Options)
	Thread	G x L	
1	M8 x 25		AS-M8x25-W3
	5/16-18 UNC x 1		AS-U5/16-18x1-W3
2	M8 x 28		AS-M8x28-W3
	5/16-18 UNC x 1-1/8		AS-U5/16-18x1-1/8-W3
3	M8 x 45		AS-M8x45-W3
	5/16-18 UNC x 1-3/4		AS-U5/16-18x1-3/4-W3
1D	M8 x 25		AS-M8x25-W3
	5/16-18 UNC x 1		AS-U5/16-18x1-W3
2D	M8 x 28		AS-M8x28-W3
	5/16-18 UNC x 1-1/8		AS-U5/16-18x1-1/8-W3
3D	M8 x 45		AS-M8x45-W3
	5/16-18 UNC x 1-3/4		AS-U5/16-18x1-3/4-W3

Group STAUFF	Dimensions (mm/in)		Ordering Codes (Standard Options)
	Thread	G x L	
1	M8 x 30		AS-M8x30-W3
	5/16-18 UNC x 1-1/4		AS-U5/16-18x1-1/4-W3
2	M8 x 35		AS-M8x35-W3
	5/16-18 UNC x 1-3/8		AS-U5/16-18x1-3/8-W3
3	M8 x 50		AS-M8x50-W3
	5/16-18 UNC x 2		AS-U5/16-18x2-W3
1D	M8 x 30		AS-M8x30-W3
	5/16-18 UNC x 1-1/4		AS-U5/16-18x1-1/4-W3
2D	M8 x 35		AS-M8x35-W3
	5/16-18 UNC x 1-3/8		AS-U5/16-18x1-3/8-W3
3D	M8 x 50		AS-M8x50-W3
	5/16-18 UNC x 2		AS-U5/16-18x2-W3

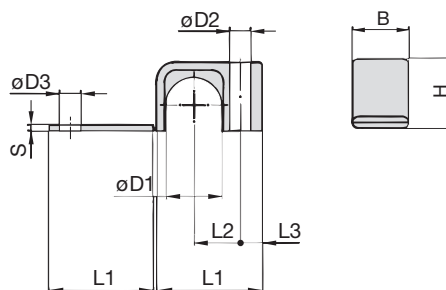
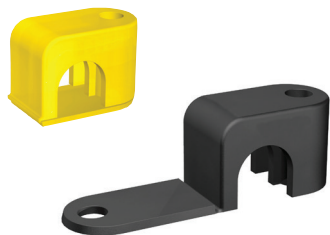
Ordering Codes

Hexagon Head Bolt \*AS-\*M8x25-\*W3

- \* Type of bolt Hexagon Head Bolt (according to DIN 931 / 933 or ANSI / ASME B18.2.1.) AS
- \* Thread code Thread dimension according to dimension table M8x25
- \* Material code Carbon Steel, zinc/nickel-plated W3

All threaded parts are available with Metric ISO thread or unified coarse (UNC) thread according to dimension table. Alternative sizes (e.g. for bolts M6 and 1/4-20 UNC), materials and surface finishings are available upon request.

## Clamp Body - Single Design Type LB



### Ordering Codes

#### Clamp Body

**\*LB-\*1\*03.2-\*PP**

- \* Light Series: Clamp Body / Single Design **LB**
- \* STAUFF Group **1**
- \* Exact outside diameter  $\phi D1$  (mm) **03.2**
- \* Material code (see below) **PP**

### Standard Materials



**Polypropylene**  
Colour: Black  
Material code: **PP**



**Polyamide**  
Colour: Yellow  
Material code: **PA**

See pages 178 / 179 for material properties and technical information.

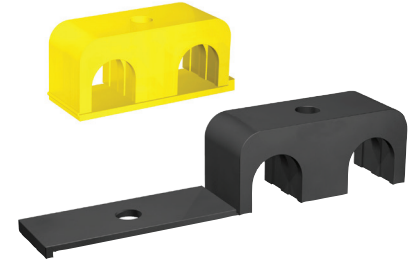
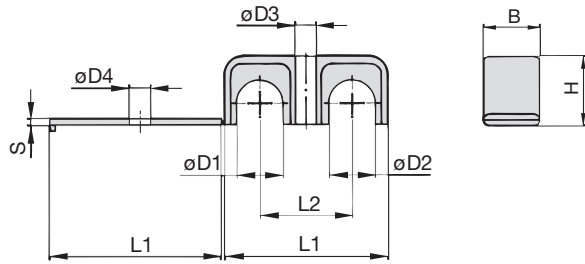
Alternative materials are available upon request.  
Please contact STAUFF for further information.

### Applications

- Pneumatics, Instrumentation and Automotive Technology,  
Machine Tool Industry, Lubrication, Mechanical Engineering

Group	Outside Diameter		Nominal Bore Pipe (in)	Ordering Codes (1 Clamp Body) (** = Material)	Dimensions (mm/in)								
	Pipe / Tube / Hose $\phi D1$				L1	L2	L3	B	H	S	$\phi D2$	$\phi D3$	
1	3,2	1/8		LB-103.2-**-**									
	6			LB-106-**-**	22	9	6,5	12	10,5	2	6,8	7	
	6,4	1/4		LB-106.4-**-**	.87	.35	.26	.47	.41	.08	.27	.28	
	8			LB-108-**-**									
2	9,5	3/8		LB-209.5-**-**									
	10		1/8	LB-210-**-**	27	11	7	16	15	2	6,8	7	
	11,1			LB-211.1-**-**	1.06	.43	.28	.63	.59	.08	.27	.28	
	12			LB-212-**-**									
3	12,7	1/2		LB-312.7-**-**									
	13,5		1/4	LB-313.5-**-**									
	14			LB-314-**-**									
	15			LB-315-**-**	34	15	7	20	22,5	2	6,8	7	
	16	5/8		LB-316-**-**	1.34	.59	.28	.79	.89	.08	.27	.28	
	17,2		3/8	LB-317.2-**-**									
4	18			LB-318-**-**									
	19	3/4		LB-419-**-**									
	20			LB-420-**-**									
	21,3		1/2	LB-421.3-**-**	42	19	7	20	30	2	6,8	7	
	22			LB-422-**-**	1.65	.75	.28	.79	1.18	.08	.27	.28	
	25			LB-425-**-**									
	25,4	1		LB-425.4-**-**									

Additional outside diameters are available upon request. Please contact STAUFF for further information.

**Clamp Body - Twin Design  
Types LBG / LBU**


Group	Outside Diameters		Nominal Bore Pipe	Ordering Codes (1 Clamp Body)	Dimensions (mm/in)						
	Ø D1	Ø D2			L1	L2	B	H	S	Ø D3	Ø D4
1	3,2	1/8		LBG-103.2/03.2-**							
	6			LBG-106/06-**	31	18	12	10,5	2	6,8	7
	6,4	1/4		LBG-106.4/06.4-**	1.22	.71	.47	.41	.08	.27	.28
	8			LBG-108/08-**							
2	9,5	3/8		LBG-209.5/09.5-**							
	10		1/8	LBG-210/10-**	39	22	16	15	2	6,8	7
	11,1			LBG-211.1/11.1-**	1.54	.87	.63	.59	.08	.27	.28
	12			LBG-212/12-**							
3	12,7	1/2		LBG-312.7/12.7-**							
	13,5		1/4	LBG-313.5/13.5-**							
	14			LBG-314/14-**							
	15			LBG-315/15-**	53	30	20	22,5	2	6,8	7
	16	5/8		LBG-316/16-**	2.09	1.18	.79	.89	.08	.27	.28
	17,2		3/8	LBG-317.2/17.2-**							
	18			LBG-318/18-**							
4	19	3/4		LBG-419/19-**							
	20			LBG-420/20-**							
	21,3		1/2	LBG-421.3/21.3-**	70	38	20	30	2	6,8	7
	22			LBG-422/22-**	2.76	1.50	.79	1.18	.08	.27	.28
	25			LBG-425/25-**							
	25,4	1		LBG-425.4/25.4-**							

**Ordering Codes**
**Clamp Body \*LBG-\*1\*03.2/03.2-\*PP**

- \* Light Series: Clamp Body / Twin Design with identical diameters **LBG**
- Clamp Body / Twin Design with different diameters **LBU**
- \* STAUFF Group **1**
- \* Exact outside diameters Ø D1 / Ø D2 (mm) **03.2/03.2**
- \* Material code (see below) **PP**

**Standard Materials**
**Polypropylene**  
 Colour: Black  
 Material code: **PP**
**Polyamide**  
 Colour: Yellow  
 Material code: **PA**

See pages 178 / 179 for material properties and technical information.

Alternative materials are available upon request. Please contact STAUFF for further information.

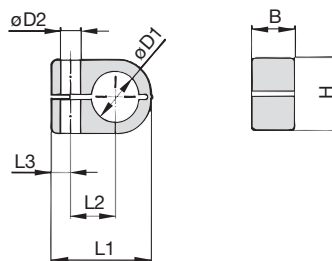
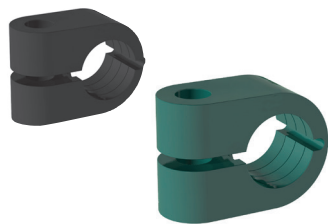
**Applications**

- Pneumatics, Instrumentation and Automotive Technology, Machine Tool Industry, Lubrication, Mechanical Engineering

Additional outside diameters and combinations of different outside diameters (Clamp Body, Type LBU) are available upon request. Please contact STAUFF for further information.



**Clamp Body - Single Design**  
**Type LN**



**Ordering Codes**

**Clamp Body**

**\*LN-\*1\*06-\*PP**

- \* Light Series: Clamp Body / Single Design **LN**
- \* STAUFF Group **1**
- \* Exact outside diameter Ø D1 (mm) **06**
- \* Material code (see below) **PP**

**Standard Materials**



**Polypropylene**  
Colour: Green  
Material code: **PP**



**Polyamide**  
Colour: Black  
Material code: **PA**

See pages 178 / 179 for material properties and technical information.

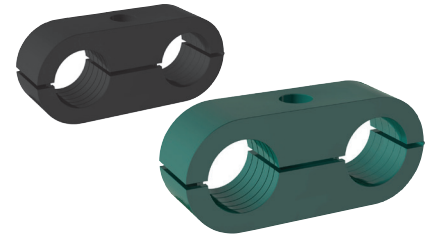
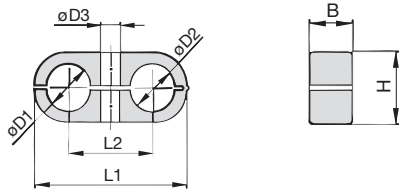
Alternative materials are available upon request. Please contact STAUFF for further information.

**Applications**

- Pneumatics, Instrumentation and Automotive Technology, Machine Tool Industry, Lubrication, Mechanical Engineering

Group	Outside Diameter		Nominal Bore Pipe (in)	Ordering Codes (1 Clamp Body) (** = Material)	Dimensions (mm/in)					
	Pipe / Tube / Hose Ø D1 (mm)	(in)			L1	L2	L3	B	H	Ø D2
1	6			LN-106-**	22	9	7	14,5	13,5	6,8
	6,4	1/4		LN-106.4-**	.87	.35	.28	.57	.53	.27
	8			LN-108-**						
2	8			LN-208-**						
	9,5	3/8		LN-209.5-**	27	11	7	14,5	18,5	6,8
	10		1/8	LN-210-**	1.06	.43	.28	.57	.73	.27
	12			LN-212-**						
3	12,7	1/2		LN-212.7-**						
	10		1/8	LN-310-**						
	12			LN-312-**						
	12,7	1/2		LN-312.7-**						
	13,5		1/4	LN-313.5-**	33	15	7	14,5	23,5	6,8
	14			LN-314-**	1.30	.59	.28	.57	.93	.27
4	15			LN-315-**						
	16	5/8		LN-316-**						
	14			LN-414-**						
	15			LN-415-**						
	16	5/8		LN-416-**						
	17,2		3/8	LN-417.2-**	40	19	7	14,5	30,5	6,8
	18			LN-418-**	1.57	.75	.28	.57	1.20	.27
	19	3/4		LN-419-**						
20			LN-420-**							
21,3		1/2	LN-421.3-**							
22			LN-422-**							

Additional outside diameters are available upon request. Please contact STAUFF for further information.

**Clamp Body - Twin Design  
Type LNGF / LNUF**


Group STAUFF	Outside Diameters Pipe / Tube / Hose Ø D1 / Ø D2		Nominal Bore Pipe (in)	Ordering Codes (1 Clamp Body) (** = Material)	Dimensions (mm/in)				
	(mm)	(in)			L1	L2	B	H	Ø D3
1	6			LNGF-106/06-**	32	18	14,5	13,5	6,8
	6,4	1/4		LNGF-106.4/06.4-***	1.26	.70	.57	.53	.27
	8			LNGF-108/08-**					
2	8			LNGF-208/08-**					
	9,5	3/8		LNGF-209.5/09.5-***	41	22	14,5	18,5	6,8
	10		1/8	LNGF-210/10-***	1.61	.86	.57	.73	.27
	12			LNGF-212/12-***					
	12,7	1/2		LNGF-212.7/12.7-***					
3	10		1/8	LNGF-310/10-***					
	12			LNGF-312/12-***					
	12,7	1/2		LNGF-312.7/12.7-***	54	30	14,5	23,5	6,8
	13,5		1/4	LNGF-313.5/13.5-***	2.13	1.18	.57	.93	.27
	14			LNGF-314/14-***					
	15			LNGF-315/15-***					
4	16	5/8		LNGF-316/16-***					
	14			LNGF-414/14-***					
	15			LNGF-415/15-***					
	16	5/8		LNGF-416/16-***					
	17,2		3/8	LNGF-417.2/17.2-***	70	38	14,5	30,5	6,8
	18			LNGF-418/18-***	2.76	1.50	.57	1.20	.27
	19	3/4		LNGF-419/19-***					
	20			LNGF-420/20-***					
21,3		1/2	LNGF-421.3/21.3-***						
22			LNGF-422/22-***						

**Ordering Codes**
**Clamp Body \*LNGF-\*1\*06/06-\*PP**

- \* Light Series: Clamp Body / Twin Design with identical diameters **LNGF**
- Clamp Body / Twin Design with different diameters **LNUF**
- \* STAUFF Group **1**
- \* Exact outside diameters Ø D1 / Ø D2 (mm) **06/06**
- \* Material code (see below) **PP**

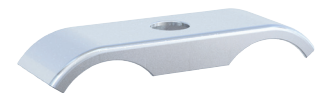
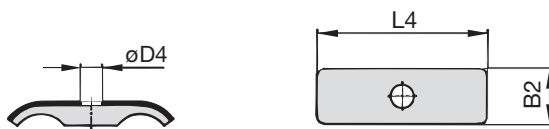
**Standard Materials**
**Polypropylene**  
 Colour: Green  
 Material code: **PP**
**Polyamide**  
 Colour: Black  
 Material code: **PA**

See pages 178 / 179 for material properties and technical information. Alternative materials are available upon request. Please contact STAUFF for further information.

**Applications**

- Pneumatics, Instrumentation and Automotive Technology, Machine Tool Industry, Lubrication, Mechanical Engineering

Additional outside diameters and combinations of different outside diameters (Clamp Body, type LNUF) are available upon request. Please contact STAUFF for further information.

**Cover Plate  
Type DPL**


Group STAUFF	Dimensions (mm/in)			Ordering Codes (Standard Options)
	L4	B2	Ø D4	
1	29,5	15,5	6,8	DPL-1-W3
	1.16	.61	.27	
2	40	15,5	6,8	DPL-2-W3
	1.57	.61	.27	
3	51	16	6,8	DPL-3-W3
	2.01	.63	.27	
4	63,5	16	6,8	DPL-4-W3
	2.50	.63	.27	

**Ordering Codes**
**Cover Plate \*DPL-\*1-\*W3**

- \* Cover Plate for Clamp Body / Twin Design **DPL**
- \* STAUFF Group **1**
- \* Material code Carbon Steel, zinc/nickel-plated **W3**

Alternative materials and surface finishings are available upon request. Contact STAUFF for further information. Please note: The maximum tightening torque for bolts is 2,5 N·m (1.85 ft·lb).

